

G25JCS38XX Series Contractor

90° angle floor to wall antimicrobial grab bar with reversible outrigger. Reversible orientation. 1.25" diameter, no maintenance 3mm thick antimicrobial vinyl coating. Concealed ABS 4-hole flange plate.

Mounting hardware supplied for wood stud installation.

Product Data

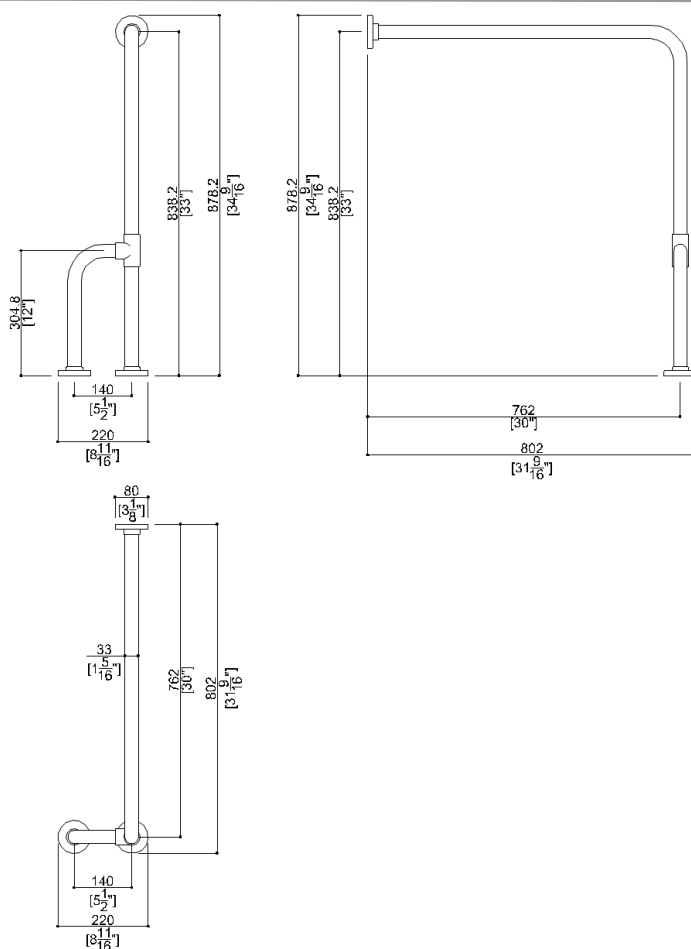
Overall Dimensions (Inch.)	8-11/16 x 31-9/16 x 34-9/16
Net Weight (lbs.)	8.05

Installation Hardware Details

Stainless steel screw	TSP 5x60 Inox
-----------------------	---------------

Packaging Details

Package	Nylon bag in cardboard packaging
Package dimensions (Inch.)	21-11/16 x 3-1/8 x 31-1/8
Package weight (lbs.)	10.03



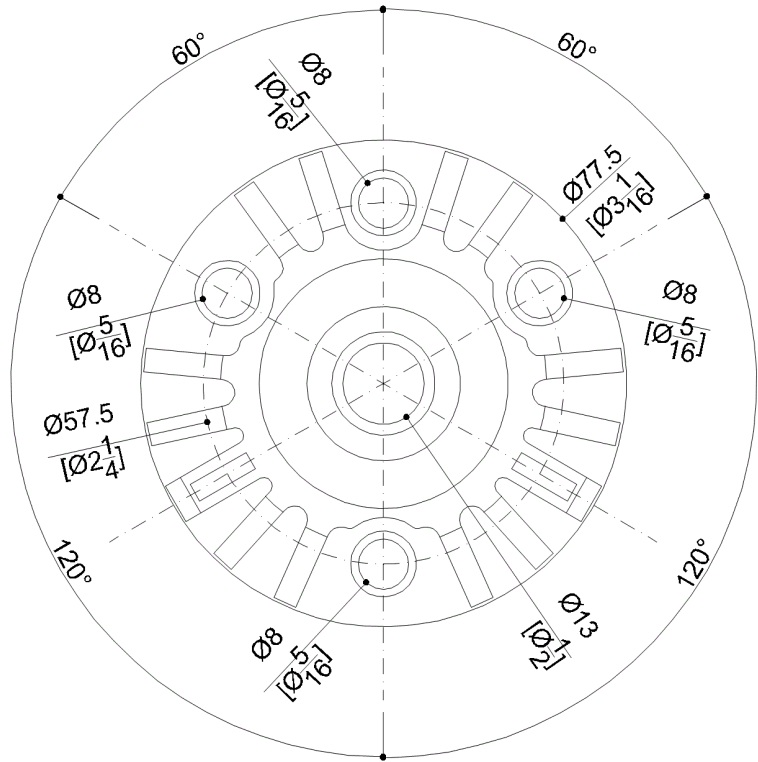
BERL'S COMMERCIAL SUPPLY
BERLS.COM
(704) 937-2673
129 Oakpark Drive, Unit A, Mooresville, NC 28115



G25JCS38XX Series Contractor

Y87JKS01

Fixing plate



Available Finishes (xx)

D1	Black	D2	Greystone	I1	Ivory
I2	Biscuit	W1	White		

Materials and finishes

Steel	Galvanised
Polyamid	Glossy
Antibacterial vinyl	Glossy

Load Capacity

Vertical	331 lbs.	Horizontal	88 lbs.
----------	----------	------------	---------

Warning

Before installation and use, read the installation and use instructions in their entirety. If questions arise please contact Ponte Giulio company.

Cleaning

Product can be cleaned with a cloth and warm soapy water. Non abrasive, solvent free cleaners can also be used.

Warranty

Please visit www.pontegiulio.com for complete warranty details.