

G02JDL31XX Series Bariatric

L-shaped double folding bariatric shower seat with legs

Mounting hardware supplied for wood stud installation.

Product Data

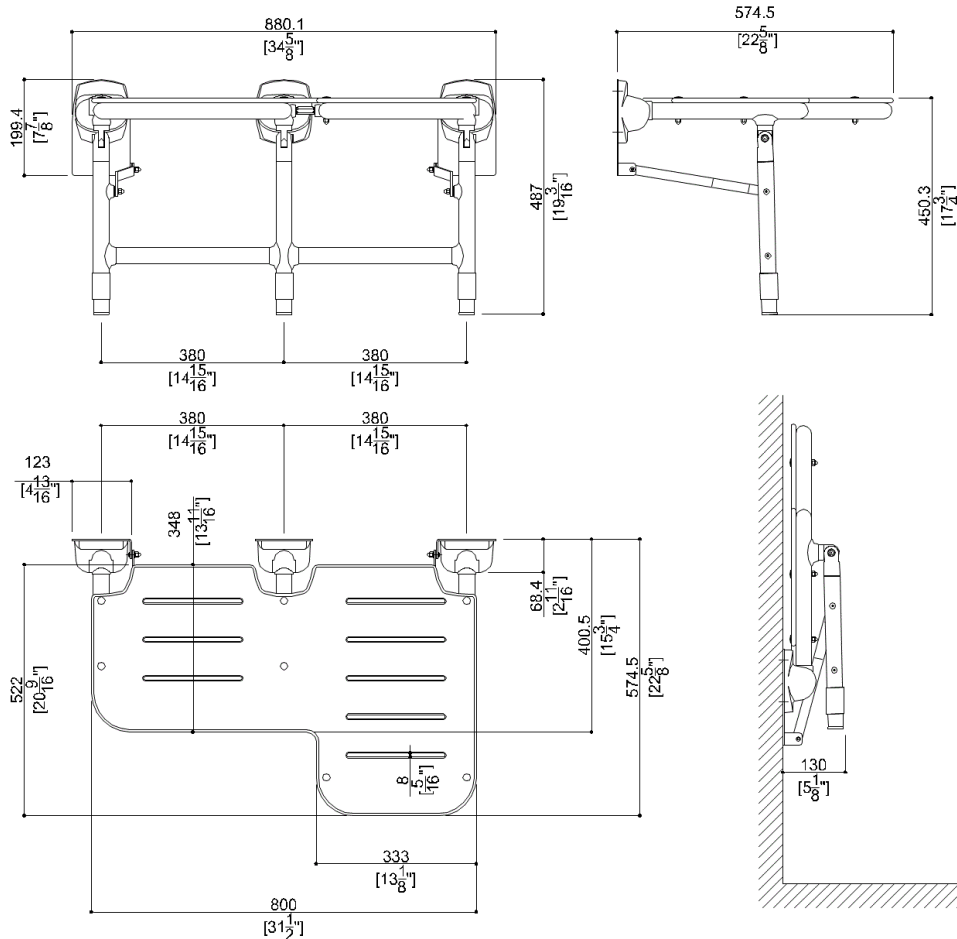
| | |
|----------------------------|---------------------------|
| Overall Dimensions (Inch.) | 34-5/8 x 22-5/8 x 19-3/16 |
| Net Weight (lbs.) | 35.49 |

Installation Hardware Details

| | |
|-----------------------|-----------------|
| Stainless steel screw | TE inox A2 8x70 |
|-----------------------|-----------------|

Packaging Details

| | |
|------------------------------|------------------------|
| Package | Cardboard package |
| Package dimensions (Inch.) | 35 x 5-11/16 x 29-5/16 |
| Weight with Packaging (lbs.) | 38.8 |

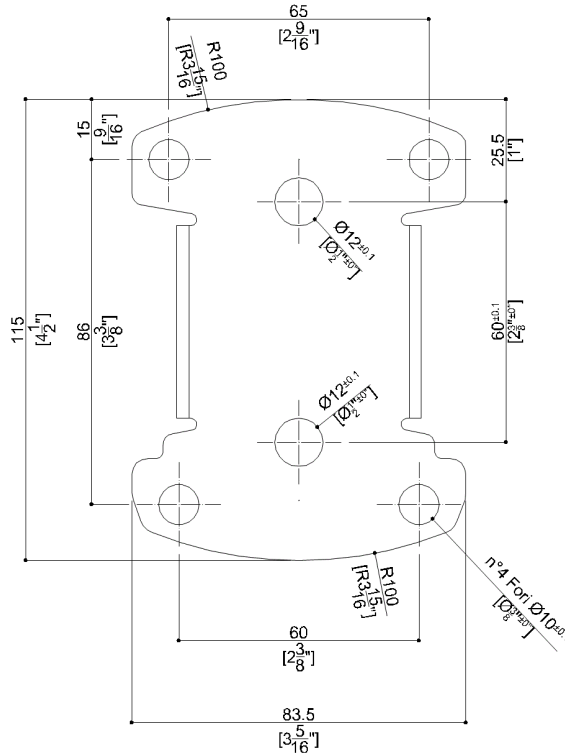


129 Oakpark Drive, Unit A, Mooresville, NC 28115
 (704) 937-2673
 BERLS.COM
 BERL'S COMMERCIAL SUPPLY

G02JDL31XX Series Bariatric

Y88JKS27

Stainless steel AISI304 fixing plate



Available Finishes (xx)

Seat

W8
 Cold White

Structure

W1
 White

Materials and finishes

| | |
|-----------------|----------|
| Polyamide | Polished |
| Stainless Steel | Rough |
| Vinyl | Polished |
| HPL | Matt |

Load Capacity

Vertical 1000 lbs.

Warning

Before installation and use, read the installation and use instructions in their entirety. If questions arise please contact Ponte Giulio company.

Cleaning

Product can be cleaned with a cloth and warm soapy water. Non abrasive, solvent free cleaners can also be used.

Warranty

Please visit www.pontegiulio.com for complete warranty details.