

Clean Dry™ High Speed Hand Dryer

FEATURES

- High speed hand dryer
- Hygienic, touch-free operation
- Splash resistant
- Space saving, in-wall design
- Vandal proof water tray
- Low Operating noise 56dB(A)
- Energy Efficient 390W
- AC powered
- Stainless Steel Cover
- Flush mount
- ADA compliant

COLORS/FINISHES

- #SS Stainless Steel Finish

CODES/STANDARDS

- Meets or exceeds ANSI/UL 507, 9th edition, Rev. June 18th 2012 and CSA C22.2 No. 113-12 Oct 2012.
- Certifications: Intertek/ETL
- Code Compliance: NEC, CEC
- ADA compliant



PRODUCT SPECIFICATION

TOTO Model No. HDR111#SS shall be a high speed hand dryer. The product shall provide hygienic, touch-free operation. The product shall have vandal proof water tray to prevent wet floor. The product shall have operating noise of 56dB(A) or less. The product shall be AC powered and consume 390 W or less. The product shall have stainless steel cover. The product shall allow for flush mount and be ADA compliant.

HDR111#SS

Clean Dry™ High Speed Hand Dryer

SPECIFICATIONS

- Warranty One Year Warranty
- Power Connection Hardwired
- Power Rating 120V AC, 3.3Amps, 60 Hz, 390 W
- Power Saving Function Automatically turns OFF when hands are removed or after 60 seconds of use
- Air Speed 221 mph
- Water Tray Capacity 0.22 gal (850 ml)
- Unit Size 12-5/8" x 6-1/2" x 22-5/8"
(320mm x 164mm x 575mm)
- Unit Weight 16.7 lb (7.6 kg)
- Operating Temperature 32F°-113F° (0C°-45C°)
- Shipping Size 27-1/8" x 15-3/4" x 8-13/16"
(690mm x 398mm x 223mm)
- Shipping Weight 22.7lb (10.3kg)

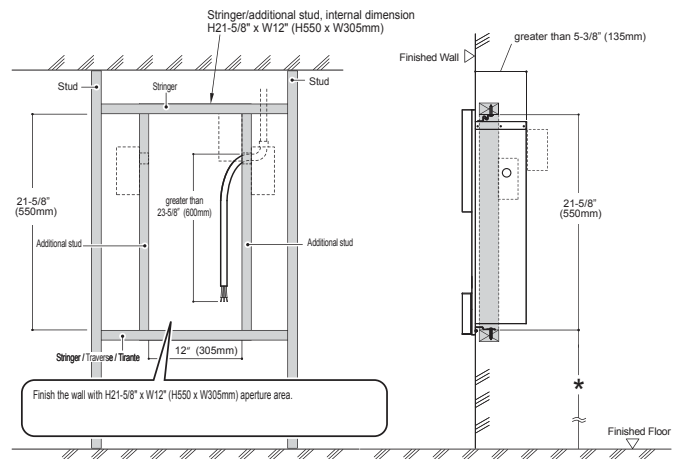
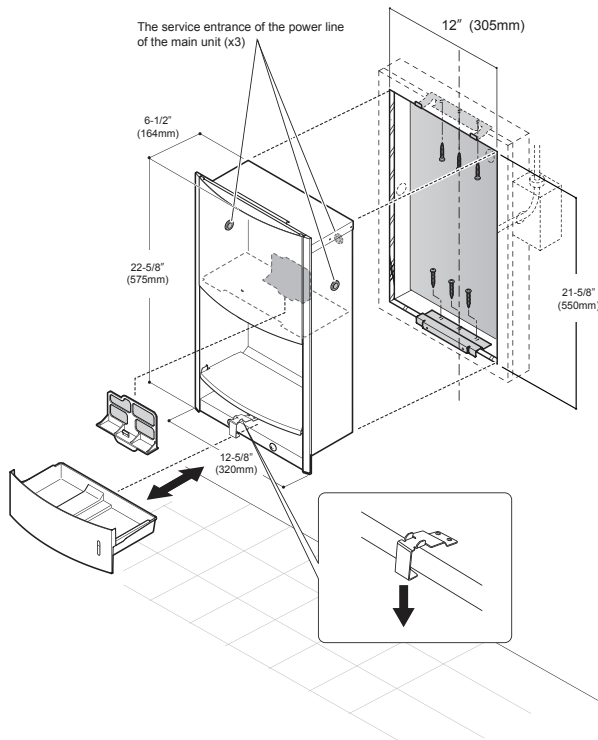
These dimensions and specifications are subject to change without notice.

INSTALLATION NOTES

Meets the American Disabilities Act Guidelines, ANSI A117.1 and CSA B651 requirements when mounted in a recessed wall where the front surface is not more than 4" (102mm) from finished wall and mounting height for U.S. is 48" (1219mm) max to blower outlet from finished floor, and for Canada is 47-1/4" (1200mm) max to blower outlet from finished floor.

Check local code requirements for additional mounting height details.

ROUGH-IN



- * Recommended mounting bracket (lower) heights from floor are as follow:
 For general users: 31-1/4" (795mm)
 For users in wheel chairs: 23-7/8" (607mm)
 For children: 21-1/2" (545mm)

Meets the American Disabilities Act Guidelines, ANSI A117.1 and CSA B651 requirements when mounting height for U.S. is 48" (1219mm) max to blower outlet from floor, and for Canada is 47-1/4" (1200mm) max to blower outlet from floor. Check local code requirements for additional mounting height details.

TOTO

These dimensions and specifications are subject to change without notice

Ph: (888) 295-8134 | Fax: (800) 699-4889 | www.totousa.com | © TOTO USA

SS-01067 v. 02