

# Auto Deck Mounted Soap Dispenser

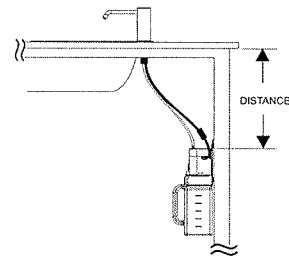
## 1. SPECIFICATIONS:

- Dimensions (W x H x D)
 

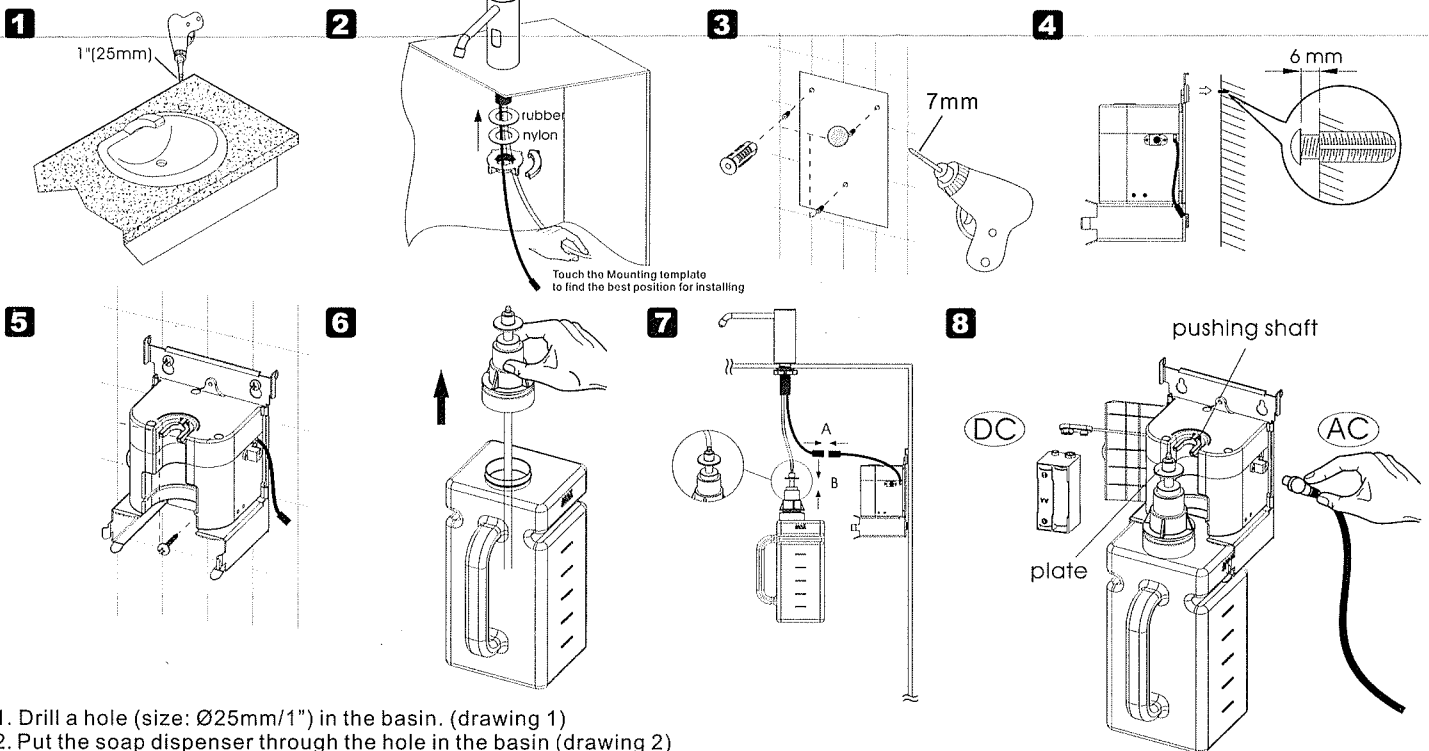
CSD11/21	46mm x 113mm x 147mm (1-13/16" x 4-7/16" x 5-25/32")
CSD12/22	50mm x 122mm x 155mm (1-31/32" x 4-13/16" x 6-1/2")
CSD13/23	38.1mm x 97.1mm x 136.1mm (1-1/2" x 3-53/64" x 5-23/64")
- Soap Tank Capacity {ml(fl oz)} 1500(50.7)
- Adaptor Type Required 6 VAC Plug-In Adaptor
- Battery Type Required Alkaline (1.5V) AA size, Qty 4
- Battery Life Estimated 20,000 cycles or 1 year
- Room Temperature {°C(°F)} 5 ~ 40 (41 ~ 104)
- Dispensing Volume {ml(fl oz)} Liquid Soap: 1 ~ 1.5 (0.034 ~ 0.051) / Foam Soap : 0.6 ~ 0.8 (0.02 ~ 0.026)
- Applicable Viscosity Range {cP(mPas)} 1 ~ 3000 (1 ~ 3000)
- Operation Mode Automatic
- A blinking green light means the soap tank is empty.
- A blinking red light means the battery is low (#5.2V).
- A solid green light means the wrong kind of soap has been used.
- Soap dispenser will dispense once every 48 hours if there is no action in between to avoid a clog of the tip.
- After connecting to the power or refilling the soap, it will continue dispensing soap for a maximum of 10 times till the user removes hands.

## 2. RECOMMENDED INSTALLATION:

- DISTANCE  $\leq 25\text{CM}(9-27/32")$



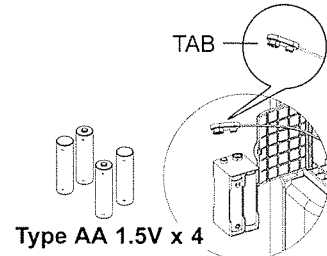
## 3. INSTALLATION STEPS, Tile or Dry Wall



1. Drill a hole (size:  $\varnothing 25\text{mm}/1"$ ) in the basin. (drawing 1)
2. Put the soap dispenser through the hole in the basin (drawing 2)  
Place the rubber washer & nylon washer in the thread on the shaft.  
Use the nut to fasten the soap dispenser to the basin.
3. Make sure the soap rubber tube can touch the wall in order to find the best position to install the control box assembly.
4. Put the mounting template in the best installation position on the wall according to the position of the holes in the mounting template.  
Then drill 3 holes (size: 7mm) and put the 3 wall plugs in the holes (drawing 3).
5. Put two fixing screws into the top wall plugs, but leave a 6mm space between the head of the screw and wall, so the control box assembly can hang properly. (drawing 4)
6. When the control box assembly has been hung on the wall, fasten the third screw into the bottom wall plug. (drawing 5)
7. Pull up the soap pump, fill in the liquid soap and then push down the soap pump until you hear it snap into place (drawing 6)
8. Connect the wires of the soap dispenser to the wire of the control box assembly. (drawing 7).  
Connect the tube of the soap dispenser to the connector on the soap pump. (drawing 7)
9. Push the soap tank to the track. Make sure the soap pump plate is under the pushing shaft before you put back the soap tank, so the soap dispenser can work properly. (drawing 8)
10. Plug-in an AC adapter or battery box to supply power. (drawing 8). Installation finished.

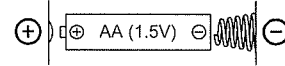
#### 4. OPERATION INSTRUCTIONS

1. Open cover on battery compartment, remove battery box and unplug cable; install four (4) new Alkaline Type AA 1.5V batteries with correct polarity (note the +/- indication) to obtain 6V DC ± 10% at the plug.
2. Reinstall battery box .
3. Trigger the sensor with hands or a towel to check proper soap dispensing cycle.



#### 5. IMPORTANT NOTICE

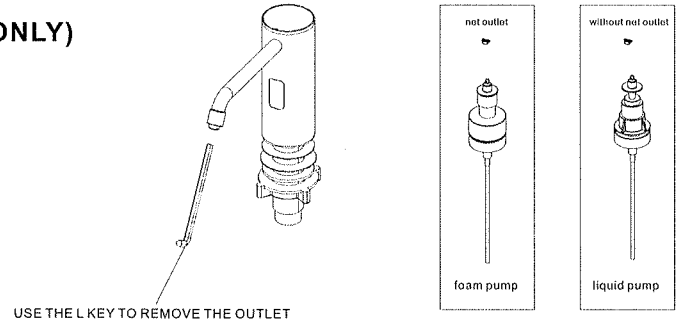
1. Use fresh new liquid soap only and clean the soap container properly before each re-fill. Deposits of old soap will lead to malfunction and jamming.
2. Do not dilute liquid soap unless it's concentrate and do not use soap containing abrasive. Observe indicated viscosity factor of liquid soap.
3. Do not immerse the soap dispenser in water or clean it under running water. This will lead to a short circuit.
4. Should the dispenser be out of order and batteries have been replaced, do not attempt any repair work. Call your dealer for professional assistance.



Caution : Batteries installed with incorrect polarity may cause malfunction.

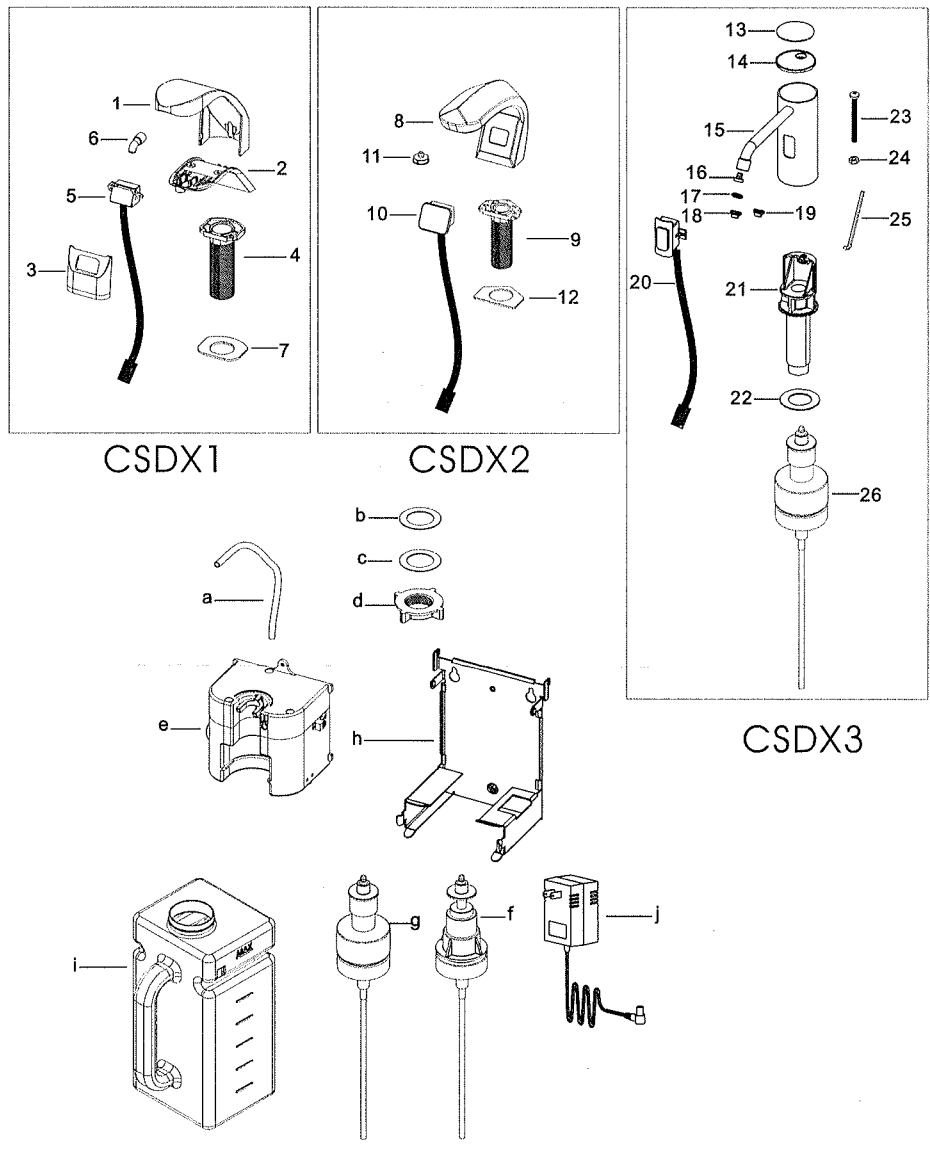
#### 6. CHANGE OR CLEAN THE OUTLET (CSD-X3 ONLY)

1. If you want to use different pumps, use the L key to change it to a different outlet.
2. When the volume of foam soap is found reduced, remove the foaming net by L key and wash it. (net outlet only)
3. It is recommended to clean the foaming net and its outlet every three months. (net outlet only)



#### PARTS :

1. CSDX1 Top cover
2. CSDX1 Bottom cover
3. CSDX1 Front cover
4. CSDX1 Mounting shaft
5. CSDX1 Sensor
6. CSDX1 Elbow connector
7. CSDX1 Rubber washer (top)
8. CSDX2 Chrome part
9. CSDX2 Mounting shaft
10. CSDX2 Sensor
11. CSDX2 Elbow connector
12. CSDX2 Rubber washer (top)
13. CSDX3 Nameplate
14. CSDX3 Top cover
15. CSDX3 Sus part
16. CSDX3 Elbow connector
17. O ring
18. CSDX3 Net outlet
19. CSDX3 Without net outlet
20. CSDX3 Sensor
21. CSDX3 Mounting shaft
22. CSDX3 Rubber washer (top)
23. CSDX3 Screw
24. CSDX3 Screw nut
25. L key
26. CSD23 Foam pump



- a. Soap rubber tube
- b. Rubber washer (bottom)
- c. Nylon washer
- d. Screw nut
- e. Control box assembly
- f. Soap pump
- g. Foam pump
- h. Base plate
- i. Soap tank
- j. Adapter