



# Drip Tray *plus*

SCHONMANN

Steel/Gray



This high quality drip tray captures excess water that may drip down the side of a Dyson Airblade hand dryer during high volume use.

The Dyson Drip Tray minimizes the need to wipe the area underneath the hand dryer by providing a simple click-in, click-out collection tray.

*Compatible with DYSON Airblade Models:*

**AB01, AB02, AB03, AB04, AB05, AB06, AB07, AB14**

## Construction

### Collection Tray

Manufactured of high-impact ABS polycarbonate to match Dyson Steel Gray finish

### Back Plate & Bracket

Constructed of Polished Stainless Steel.



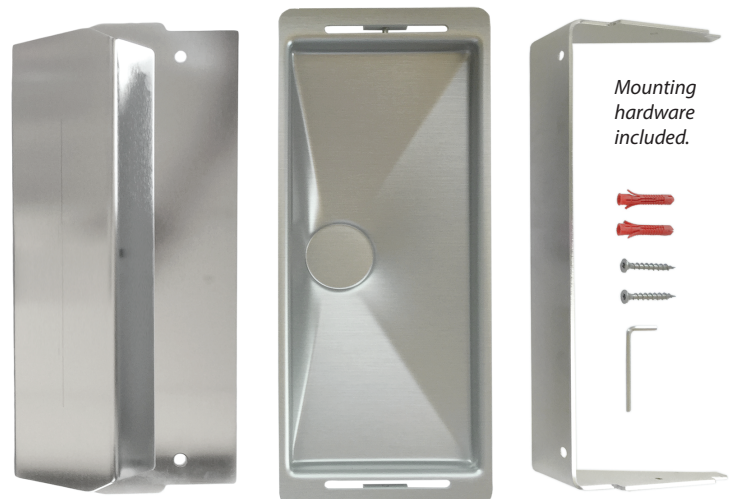
## Dimensions

### Collection Tray

13.5" Wide x 6" Deep x 2" Tall

### Back Plate

13" Wide x 6" Tall



*Mounting hardware included.*