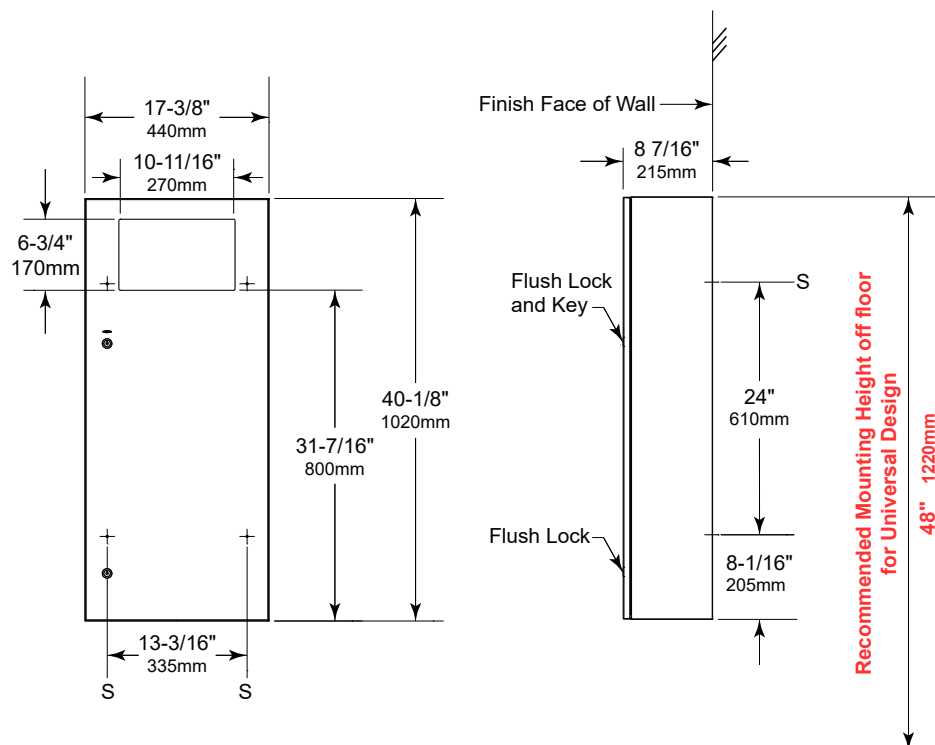




Technical Data

TrimLineSeries™ SURFACE-MOUNTED WASTE RECEPTACLE

B-35649



MATERIALS:

Cabinet — 18-8, Type-304, heavy-gauge stainless steel. All-welded construction. Exposed surfaces have satin-finish.

Skirt — 18-8, Type-304, stainless steel with satin-finish.

Door — 18-8, Type-304, 18-gauge (1.2mm) stainless steel with satin-finish. Secured to cabinet with a concealed, full-length stainless steel piano-hinge. Equipped with two tumbler locks keyed like other Bobrick washroom accessories. Tumbler locks flush with the door - no protrusion.

Waste Receptacle — Leak-proof, rigid molded plastic waste receptacle. Removable for servicing. Capacity: 12-gal. (45.4-L).

OPERATION:

To service waste receptacle, unlock door with key provided and remove waste container. Cable door-swing limiter prevents damage to washroom accessories and walls.

INSTALLATION:

Mount unit on wall with four #10 x 1-1/4" (4.8 x 32mm) sheet-metal screws (not furnished) at points indicated by an S. For plaster or dry wall construction, provide concealed backing to comply with local building codes, then secure unit with sheet-metal screws. For other wall surfaces, provide fiber plugs or expansion shields for use with sheet-metal screws, or provide 3/16" (5mm) toggle bolts or expansion bolts. If unit projects above top of wainscot, provide aluminum channel or other filler to eliminate gap between cabinet and finish face of wall.

Replacement Parts:

Skirt Kit 35649-53
Door Replacement Kit 35649-173
Plastic Waste Receptacle 39003-31

SPECIFICATION:

Surface-mounted waste receptacle shall be Type-304 stainless steel with all-welded construction; exposed surfaces shall have satin finish. Door shall be Type-304, 18 gauge (1.2mm) secured to cabinet with a concealed, full-length stainless steel piano-hinge, cable door-swing limiter and equipped with two tumbler locks keyed like other Bobrick washroom accessories. Tumbler locks flush with the door - no protrusion. Waste receptacle shall be furnished with a removable, leak-proof, rigid molded plastic waste-container with a minimum capacity of 12-gal. (45.4-L).

Surface-Mounted Waste Receptacle shall be Model B-35649 of Bobrick Washroom Equipment, Inc., Clifton Park, New York; Jackson, Tennessee; Los Angeles, California; Bobrick Washroom Equipment Company, Scarborough, Ontario; Bobrick Washroom Equipment Pty. Ltd., Australia; and Bobrick Washroom Equipment Limited, United Kingdom.