



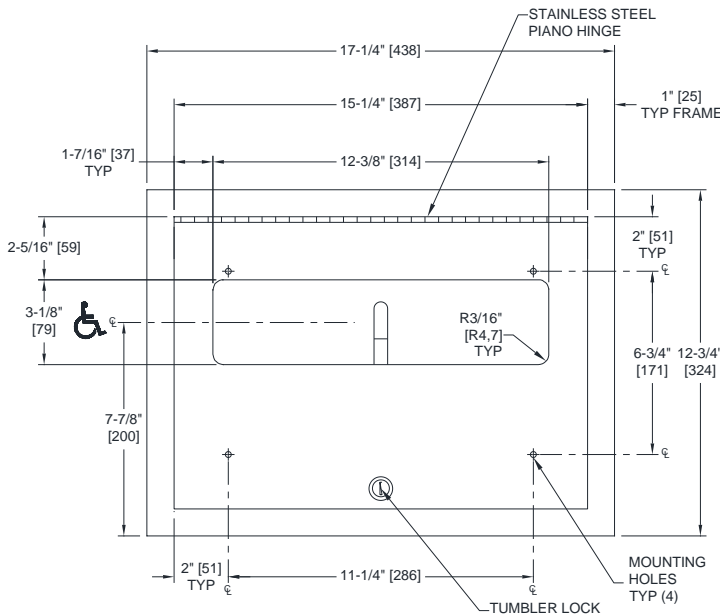
AMERICAN SPECIALTIES, INC.
 441 Saw Mill River Road, Yonkers, NY 10701
 (914) 476.9000 • (914) 476.0688
 www.americanspecialties.com

MODEL №: 0477

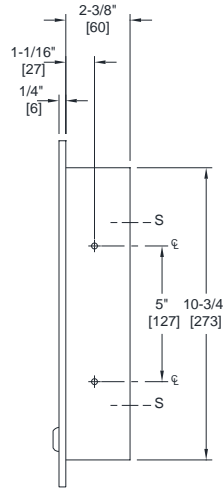
ISSUED: JAN 1987

REVISED: 16 MAR 2022

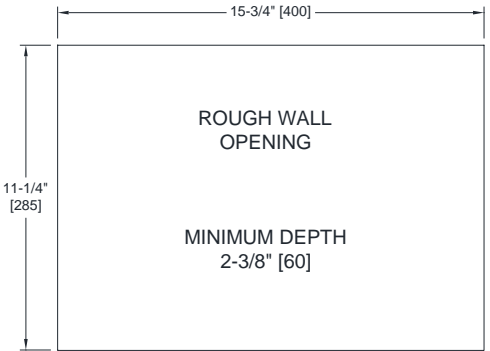
TOILET SEAT COVER DISPENSER - RECESSED



FRONT VIEW



SIDE VIEW



NOTE

ALL DIM'S INCH [MM]

ILLUSTRATION FOR REF ONLY AND NTS

FOR CLEANING INSTRUCTIONS SEE APPROPRIATE SECTIONS IN PRODUCT CARE & MAINTENANCE BULLETIN (PCM) ON ASI WEBSITE

SPECIFICATION

Recessed Toilet Seat Cover Dispenser shall hold and dispense 500 standard single or half-fold paper toilet seat covers contained in supply box and shall have cabinet, frame and door of 22 gage type 304 stainless steel alloy 18-8; all exposed surfaces shall have satin finish protected during shipment with a PVC film easily removable after installation. Face trim frame shall be one piece construction 1" [25] wide with no welded miters and shall have a 1/4" [6] return to wall. Cover dispensing slot shall have a fully deburred flat edge for snag-free dispensing and user safety. Door shall be attached to face frame with a full-length, heavy-duty 3/16" Dia. [Ø4,8] stainless steel multi-staked piano hinge and shall be held closed with a tumbler lock keyed alike to other ASI washroom equipment. Structural assembly of cabinet and door components shall be of welded construction and shall have no exposed fasteners or welded seams.

Recessed Toilet Seat Cover Dispenser shall be Model № 0477 as manufactured by American Specialties, Inc., 441 Saw Mill River Road, Yonkers, NY 10701-4913

INSTALLATION

Mount unit in wall recess using four (4) № 10 x 1-1/2" [Ø5 x 40] or length as appropriate for site conditions self-threading flat, oval or pan head screws (by others). Mounting holes are provided in side and rear walls of cabinet and are accessible through door for installation. For compliance with 2010 ADA Accessibility Standards, 2015 ABA Standards and ANSI 117.1 Standards install unit so that top of dispenser slot is 48" [1219] Maximum Above Finished Floor (AFF) if clear floor reach access is provided or 46" [1168] Max AFF if side reach over an obstruction only is provided (ie: vanity). Note that top of dispenser slot is 2-1/2" [64] below top of Rough Wall Opening.

RWO required is 15-3/4" [400] W x 11-1/4" [285] H x 2-5/8" [67] D Min

OPERATION

Covers are self-feeding until supply is depleted. Unit is manually reloaded with a full box through access door.